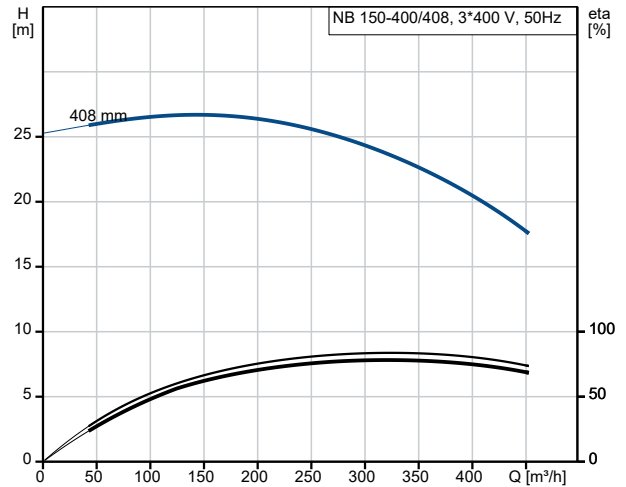
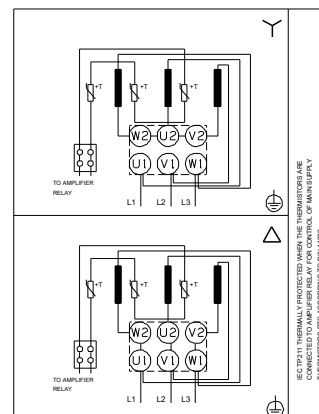
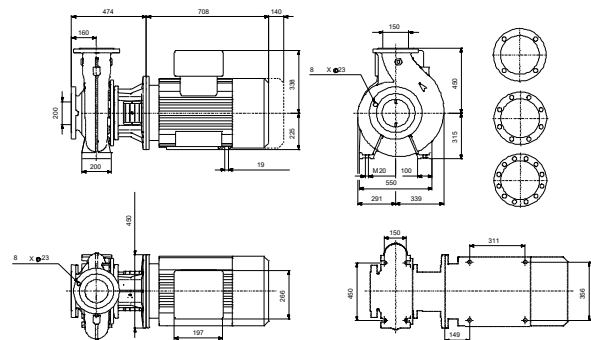
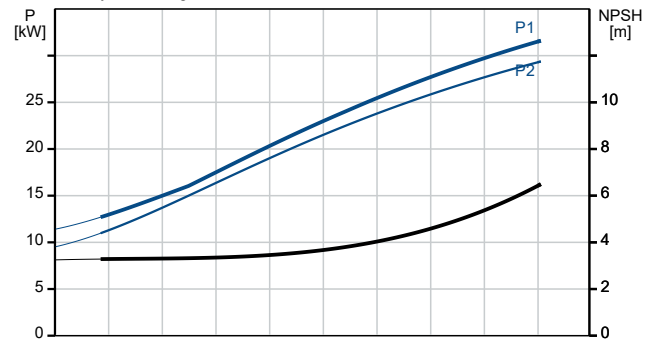


Description	Value
<b>General information:</b>	
Product name:	NB 150-400/408 AAF1AESBQQERW5
Product No:	98974584
EAN number:	5712604527054
<b>Technical:</b>	
Pump speed on which pump data are based:	982 rpm
Rated flow:	331 m³/h
Rated head:	23.78 m
Actual impeller diameter:	408 mm
Nominal impeller diameter:	400
Shaft seal arrangement:	Single
Shaft diameter:	48 mm
Code for shaft seal:	BQQE
Curve tolerance:	ISO9906:2012 3B
Pump version:	A
Bearing design:	Standard
<b>Materials:</b>	
Pump housing:	Cast iron
Pump housing:	EN-GJL-250
Pump housing:	ASTM class 35
Wear ring:	Brass
Impeller:	Cast iron
Impeller:	EN-GJL-200
Impeller:	ASTM class 30
Internal pump house coating:	CED
Material code:	A
Code for rubber:	E
Shaft:	Stainless steel
Shaft:	EN 1.4301
Shaft:	AISI 304
<b>Installation:</b>	
Maximum ambient temperature:	55 °C
Maximum operating pressure:	10 bar
Pipe connection standard:	EN 1092-2
Size of inlet connection:	DN 200
Size of outlet connection:	DN 150
Pressure rating for connection:	PN 10
Bearing lubrication:	Grease
Pump housing with feet:	Yes
Support block (Yes/No):	N
Connect code:	F1
<b>Liquid:</b>	
Pumped liquid:	Water
Liquid temperature range:	-25 .. 120 °C
Selected liquid temperature:	20 °C
Density:	998.2 kg/m³
<b>Electrical data:</b>	
Motor type:	SIEMENS
Rated power - P2:	30 kW
Mains frequency:	50 Hz
Rated voltage:	3 x 380-420D/660-725Y V
Rated current:	56.0/32.5 A
Starting current:	660 %
Cos phi - power factor:	0.83
Rated speed:	982 rpm
IE efficiency:	IE3 92,9%



Pumped liquid = Water  
Liquid temperature during operation = 20 °C  
Density = 998.2 kg/m³





Company name:

Created by:

Phone:

Date:

18/07/2024

Description	Value
IE Efficiency class:	IE3
Motor efficiency at full load:	92.9 %
Motor efficiency at 3/4 load:	93.6 %
Motor efficiency at 1/2 load:	93.5 %
Number of poles:	6
Enclosure class (IEC 34-5):	IP55
Insulation class (IEC 85):	F
Built-in motor protection:	PTC
Motor No:	83W15432
Mount. design. acc. IEC 34-7:	IM B35
Bearing insulation type N-end:	Steel Bearing
<b>Controls:</b>	
Frequency converter:	None
Pressure sensor:	N
<b>Others:</b>	
Minimum efficiency index, MEI ≥:	0.70
Net weight:	618 kg
Gross weight:	662 kg
Shipping volume:	1.1 m <sup>3</sup>
Language on pump nameplate:	GB